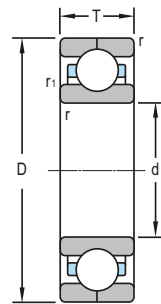
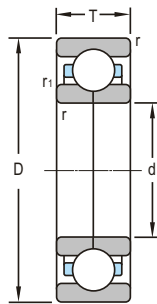


d 10~100mm

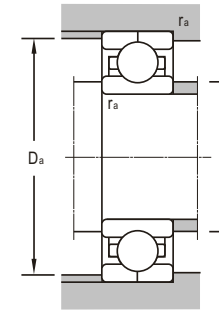
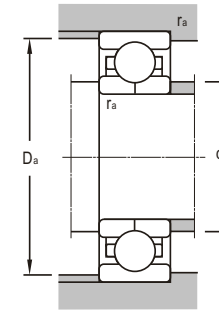
| Boundary Dimensions | | | | | | Basic Load Ratings | | Limiting Speeds | |
|---------------------|--------|-------|-------|------------------|----------------|--------------------|--------------------------|-----------------|-------|
| d | D | B | T | r _{min} | r ₁ | Dynamic C | Static C ₀ | Grease | Oil |
| mm | | | | | | kN | | r/min | |
| 10 | 28 | 8 | 8 | 0.3 | 0.3 | 5.82 | 2.53 | 24000 | 30000 |
| 16 | 30 | 106.2 | 106.2 | 1.4 | 1.4 | 11.3 | 6.5 | 7.9 | 5.4 |
| 17 | 35 | 10 | 10 | 0.3 | 0.3 | 8.23 | 4.53 | 15000 | 20000 |
| 20 | 47 | 12 | 12 | 1.1 | 0.5 | 15.5 | 8.92 | 15000 | 19000 |
| 25 | 62 | 17 | 20 | 1.1 | 0.6 | 27 | 15.6 | 11000 | 14500 |
| | 67 | 20.6 | 34 | 1 | 0.8 | 23.5 | 19.3 | 11000 | 14500 |
| 26 | 62 | 17 | 20 | 1.1 | 0.5 | 27 | 15.6 | 11000 | 14500 |
| 32 | 72 | 24.5 | 30 | 1.1 | 0.5 | 32.8 | 20.5 | 18000 | 12000 |
| 30 | 72 | 19 | 19 | 1.1 | | 38.5 | 38 | 6700 | 9000 |
| 35 | 59.482 | 14.5 | 14.5 | 1.1 | 0.5 | 21.4 | 14.9 | 8000 | 10000 |
| | 80 | 29 | 33.5 | 1.5 | 0.5 | 40.2 | 24.7 | 9000 | 11000 |
| 53 | 84 | 16.15 | 20 | 1.1 | 0.6 | 17.4 | 14.7 | 7300 | 9200 |
| 63 | 102 | 23 | 27 | 2 | 1 | 31.5 | 21.6 | 6000 | 8000 |
| 65 | 102 | 16.5 | 21.5 | 1.1 | 1.1 | 26.9 | 21.7 | 6000 | 8000 |
| | 140 | 33 | 33 | 2.1 | 2.1 | 118 | 132 | 3800 | 5300 |
| 70 | 125 | 24 | 24 | 1.5 | | 51.8 | 43.1 | 3200 | 4300 |
| 75 | 160 | 37 | 37 | 2.1 | 2.1 | 163 | 204 | 3400 | 4800 |
| 80 | 140 | 21 | 26.5 | 2 | 1 | 51 | 48 | 3500 | 4400 |
| 81 | 107 | 17 | 17 | 0.5 | 0.5 | 16.4 | 24.6 | | |
| 90 | 140 | 24 | 24 | 1.5 | | 59.1 | 56.6 | 6000 | 7600 |
| | 190 | 43 | 43 | 3 | | 193 | 259 | 2400 | 3400 |
| 91 | 117 | 20 | 20 | 0.5 | 0.5 | 17 | 26.9 | | |
| 100 | 180 | 34 | 34 | 2.1 | 2.1 | 152 | 215 | 2800 | 3800 |

| Bearing Designations | | Mounting Dimensions | | | Mass |
|----------------------|----------|---------------------|-------------------|-------------------|--------|
| Present | Original | d _{1min} | D _{amax} | r _{amax} | |
| | | mm | | | kg |
| S7600 | 6700 | 12.4 | 25.6 | 0.3 | 0.0227 |
| WR1630106.2 | 3-637 | | | | 0.253 |
| S71003 | 106103 | 19.4 | 32.6 | 0.3 | 0.0452 |
| S70204X2 | 6704 | 27 | 40 | 1 | 0.103 |
| SN7305X2/YA | 26705 | 32 | 55 | 1 | 0.276 |
| 4605-2RS | 186705 | 31 | 61 | 1 | 0.523 |
| S76/26/YA | 26905 | 33 | 55 | 1 | 0.281 |
| SN76/32/YA | 26706 | 39 | 65 | 1 | 0.454 |
| QJS306 | 176306 | 37 | 65 | 1 | 0.418 |
| LR7607 | 226707 | 42 | 53 | 1 | 0.105 |
| SN72307X2/YA | 26707 | 44 | 71 | 1.5 | 0.561 |
| 46/53/YA | 996911K1 | 60 | 77 | 1 | 0.44 |
| B76/63/YA | 26913 | 73 | 92 | 2 | 0.707 |
| QJ313 | 996713 | 72 | 95 | 1 | 0.569 |
| | 176313 | 77 | 128 | 2.1 | 2.7 |
| QJS214 | 276214 | 79 | 114 | 1.5 | 1.31 |
| QJ315N2 | 176315 | 87 | 148 | 2.1 | 4.04 |
| S7216X2/YA | 26216 | 90 | 130 | 2 | 1.33 |
| LY-Q017 | | 83.5 | 104.5 | 0.5 | 0.312 |
| QJ1018 | 1176118 | 99 | 131 | 1.5 | 1.47 |
| QJ318 | 176318 | 104 | 176 | 2.5 | 6.51 |
| LY-Q018 | | 93.5 | 114.5 | 0.5 | 0.346 |
| QJ220N2 | | 112 | 168 | 2.1 | 4.22 |



d 120~1060mm

| Boundary Dimensions | | | | | | Basic Load Ratings | | Limiting Speeds | |
|---------------------|----------|----------|----------|------------------------|----------------------|---------------------|--------------------------------|-----------------|------|
| <i>d</i> | <i>D</i> | <i>B</i> | <i>T</i> | <i>r_{min}</i> | <i>r₁</i> | Dynamic <i>C</i> | Static <i>C₀</i> | Grease | Oil |
| mm | | | | | | kN | | r/min | |
| 120 | 165 | 34 | 34 | 1.1 | 0.8 | 85.4 | 131 | 1400 | 2000 |
| | 215 | 40 | 40 | 2.1 | 2.1 | 209 | 318 | 2400 | 3200 |
| | 260 | 55 | 55 | 3 | 3 | 263 | 365 | 1600 | 2200 |
| 140 | 210 | 33 | 33 | 2 | 2 | 206 | 273 | 3200 | 4000 |
| | 250 | 42 | 42 | 3 | 3 | 252 | 436 | 2000 | 2800 |
| | 300 | 62 | 62 | 4 | 4 | 361 | 646 | 1700 | 2400 |
| 150 | 225 | 35 | 35 | 2.1 | 2.1 | 169 | 298 | 3000 | 3700 |
| 160 | 220 | 45 | 45 | 2 | 1 | 125 | 208 | 1000 | 1500 |
| | 290 | 48 | 48 | 3 | 3 | 286 | 533 | 1700 | 2400 |
| 170 | 230 | 45 | 45 | 2 | 1 | 128 | 220 | 950 | 1450 |
| | 260 | 42 | 42 | 2.1 | 2.1 | 221 | 409 | 1800 | 2400 |
| | 310 | 52 | 52 | 4 | 4 | 382 | 742 | 2000 | 1500 |
| 180 | 280 | 46 | 46 | 2.1 | 2.1 | 246 | 481 | 1300 | 1800 |
| | 280 | 46 | 46 | 2.1 | 2.1 | 246 | 481 | 1300 | 1800 |
| 190 | 260 | 33 | 33 | 2 | 2 | 125 | 177 | 2600 | 3200 |
| 220 | 300 | 60 | 60 | 2.5 | 1.2 | 219 | 392 | 1900 | 2400 |
| | 340 | 56 | 56 | 3 | 3 | 306 | 653 | 1200 | 1700 |
| 240 | 440 | 72 | 72 | 4 | 4 | 649 | 1200 | 1000 | 1500 |
| 260 | 368 | 48 | 48 | 2.1 | 2.1 | 298 | 676 | 1000 | 1400 |
| 280 | 420 | 65 | 65 | 4 | 4 | 410 | 1010 | 1400 | 1800 |
| | 389.5 | 65 | 65 | 4 | 4 | 433 | 803 | 900 | 1100 |
| 320 | 440 | 50 | 100 | 4 | 4 | 237 | 492 | 1200 | 1500 |
| | 480 | 74 | 74 | 4 | 4 | 447 | 587 | 800 | 1100 |
| | 580 | 92 | 92 | 5 | 5 | 946 | 2100 | | |
| 360 | 540 | 82 | 82 | 5 | 5 | 491 | 900 | 1000 | 1300 |
| 1000 | 1380 | 190 | | | | | | | |
| 1060 | 1500 | 195 | | | | | | | |



| Bearing Designations | | Mounting Dimensions | | | Mass |
|----------------------|----------|-------------------------|------------------------|-------------------------|--------|
| Present | Original | <i>d_{1min}</i> | <i>D_{max}</i> | <i>r_{amax}</i> | |
| | | mm | | | kg |
| 3924D | 3356924 | 127 | 158 | 1 | 2.51 |
| QJ224N2 | | 132 | 203 | 2.1 | 7.04 |
| QJF324 | 116324 | 134 | 246 | 2.5 | 15.6 |
| QJF1028 | 176128 | 150 | 200 | 2 | 4.33 |
| QJ228N2 | | 154 | 236 | 2.5 | 10.1 |
| QJ328 | | 158 | 382 | 3 | |
| QJF1030 | 176130 | 162 | 213 | 2.1 | 5.16 |
| 3932D | 3356932 | 170 | 210 | 2 | 5.41 |
| QJ232 | | 174 | 276 | 2.5 | 16 |
| 3934D | 3356934 | 180 | 220 | 2 | 5.9 |
| QJF1034 | | 182 | 248 | 2.1 | 8.18 |
| QJ234N2 | 176234K | 188 | 292 | 3 | 18.107 |
| QJ1036 | 176136 | 192 | 268 | 2.1 | 11.4 |
| QJ1036N2 | 176136K | 192 | 268 | 2.1 | 11.4 |
| QJ1938 | 1176938 | 200 | 250 | 2 | 6.02 |
| 3944D | 3356944 | 234 | 286 | 2.1 | 13.1 |
| QJ1044N2 | 176144 | 234 | 326 | 2.5 | 20.2 |
| QJF248M | | 258 | 222 | 3 | 51.6 |
| QJF1952X2 | | 272 | 356 | 2.1 | 16.9 |
| QJF1056 | 176156 | 298 | 402 | 3 | 34.3 |
| QJF1056X1 | | 298 | 371 | 3 | 23.2 |
| 7664D | | 338 | 422 | 3 | |
| QJF1064 | 176164 | 338 | 462 | 3 | 50 |
| QJF 264 M | | 342 | 558 | 4 | 123 |
| QJF1072 | 176172 | 382 | 518 | 4 | 71.5 |
| QJ 6/1000M | | | | 393 | |
| QJ 6/1060MA/C9 | | | | 393 | |